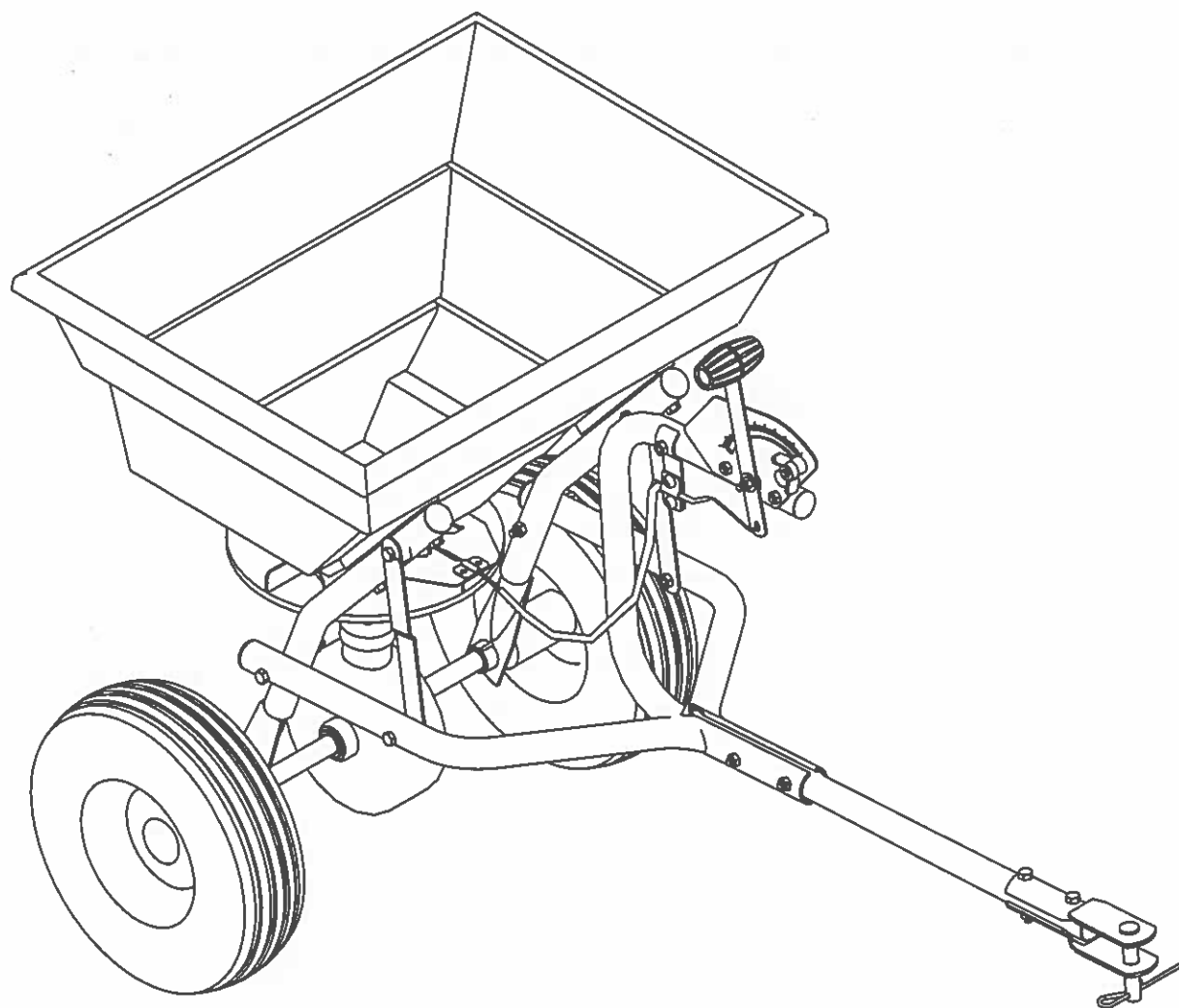


80LB TOW-BEHIND SPREADER



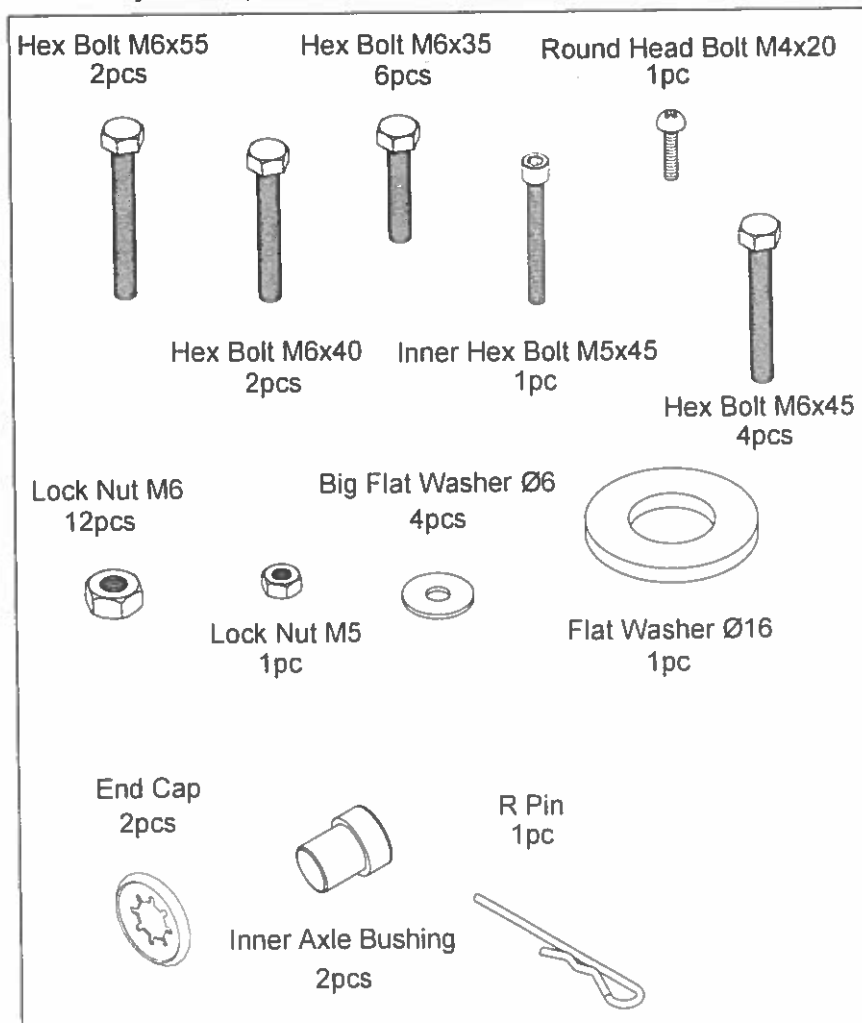
ASSEMBLY AND OPERATION INSTRUCTION

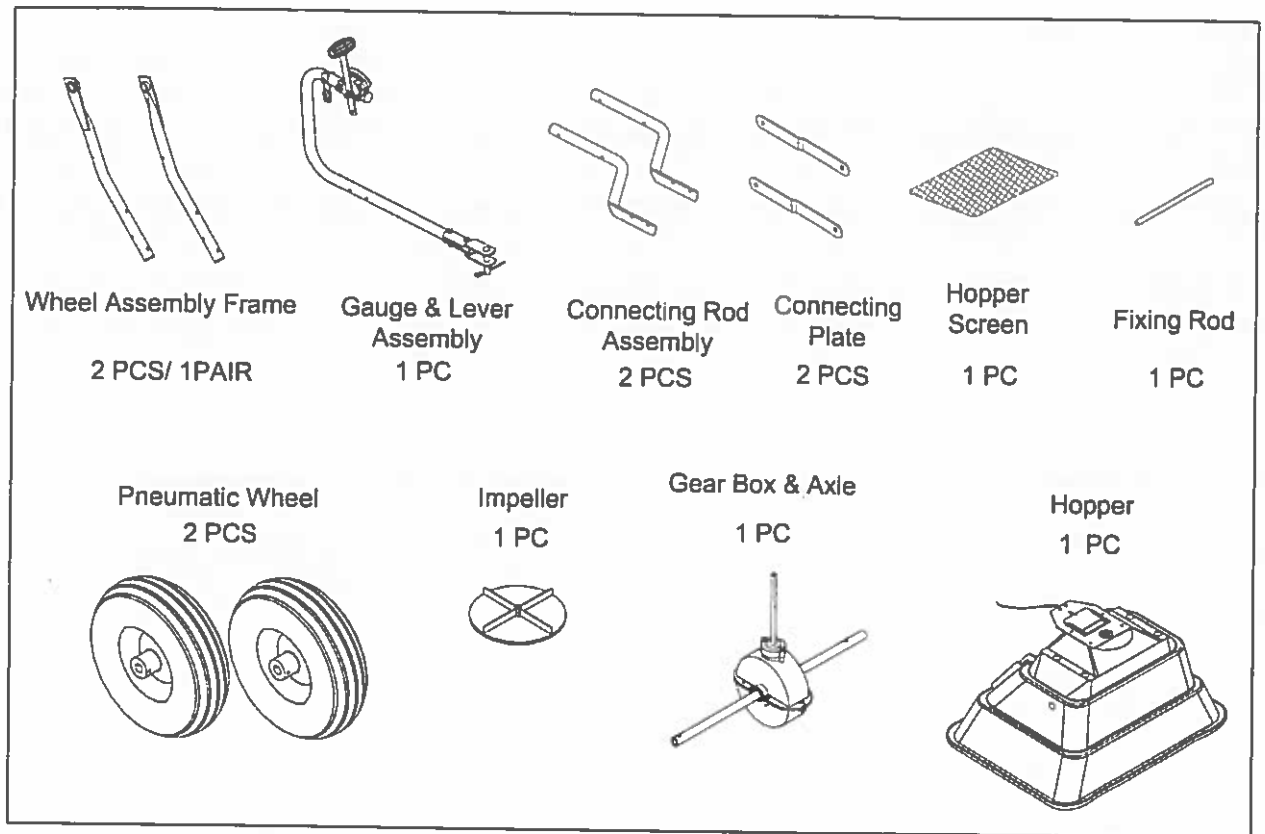
1. SAFETY RULES

READ THE DIRECTIONS BEFORE ASSEMBLY

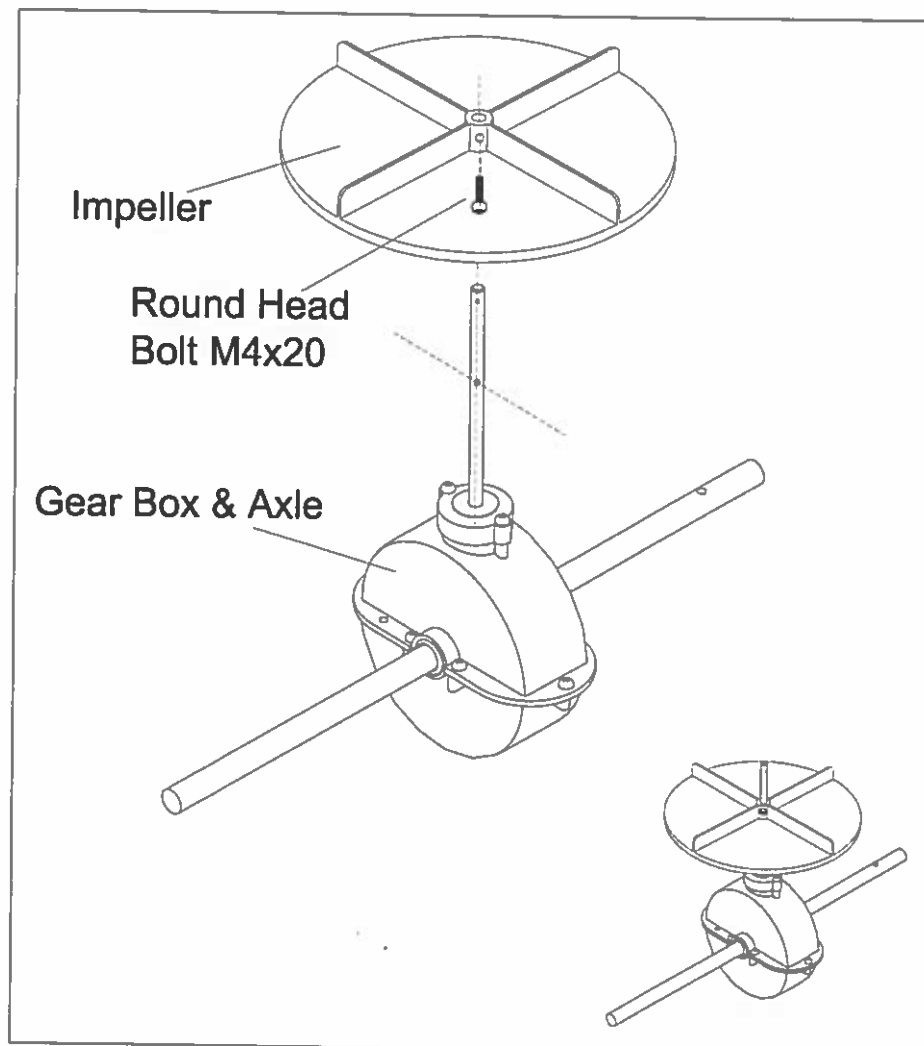
- Read the towing vehicle owners manual and towing vehicle safety rules. Know how to operate your tractor before using the tow-behind spreader.
- Read the chemical label instructions and cautions for handling and applying the chemicals purchased for spreading.
- Wear eye and hand protection when handling and when applying lawn or garden chemicals.
- Never operate tractor and spreader attachment without wearing substantial footwear, and do not allow anyone to ride or sit on spreader attachment frame.
- Never allow children to operate the tractor or spreader attachment, and do not allow adults to operate without proper instructions.
- Always begin with the transmission in first (low) gear and with the engine at low speed, and gradually increase speed as conditions permit.
- When towing spreader do not drive too close to a creek or ditch and be alert for holes and other hazards which could cause you to loose control of the spreader and tractor.
- Before operating vehicle on any grade (hill) refer to the safety rules in the vehicle owner's manual concerning safe operation on slopes. **Stay off steep slopes!**

2. Remove and identify loose parts from carton and bag.

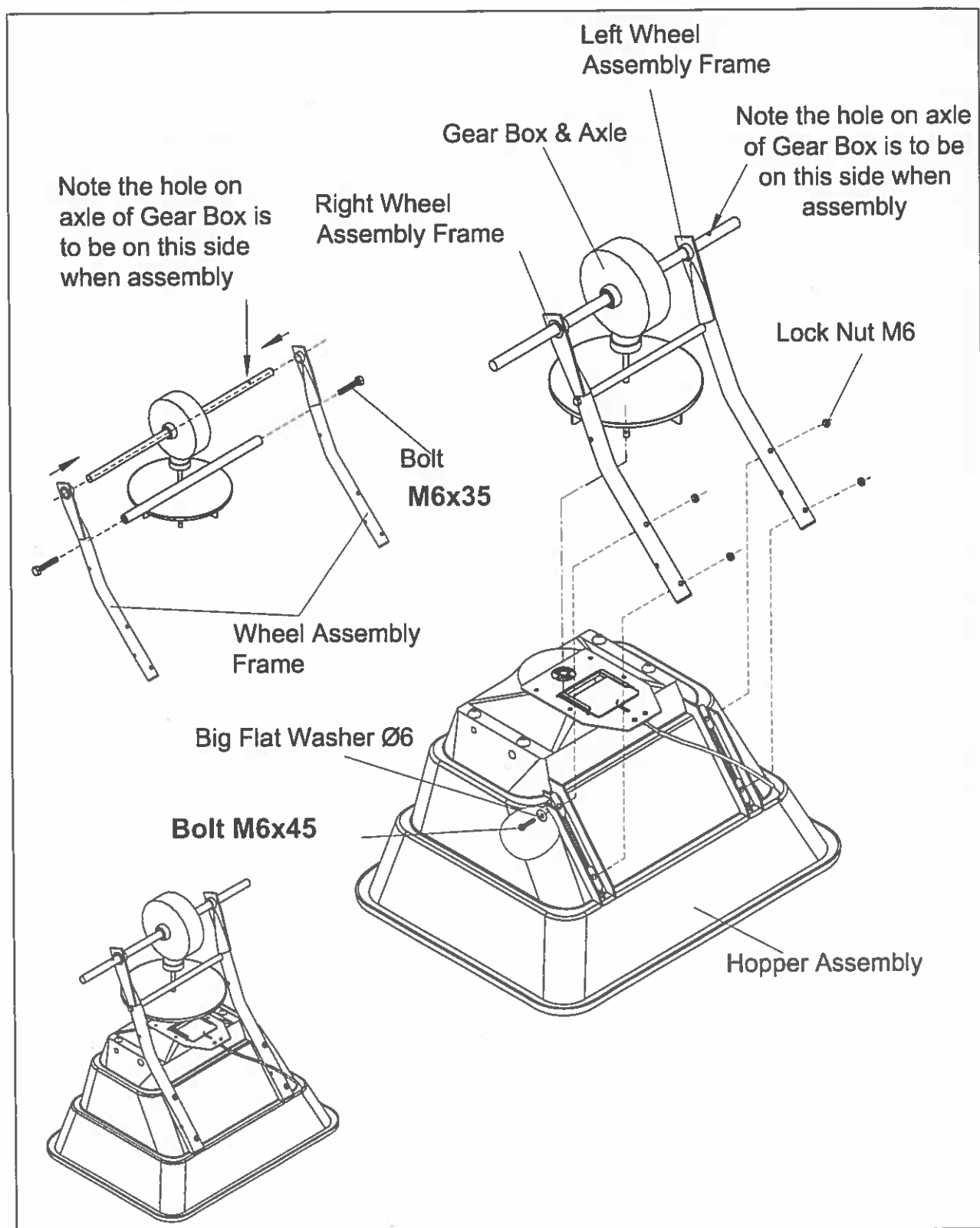




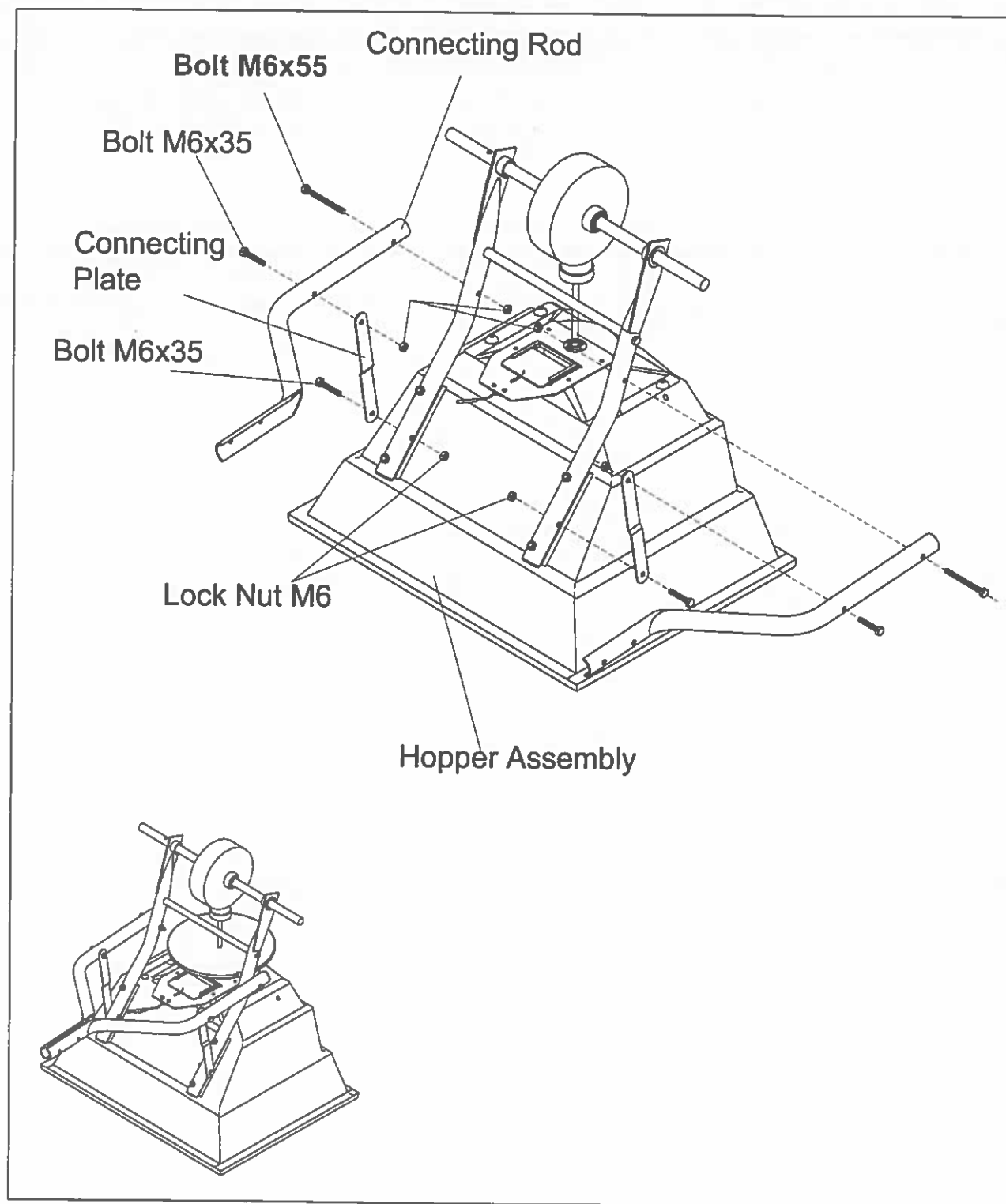
STEP1: Install Impeller onto the Gear Box & Axle Assembly. Insert Round Head Bolt M4x20 through impeller then through Gear Box Axle.



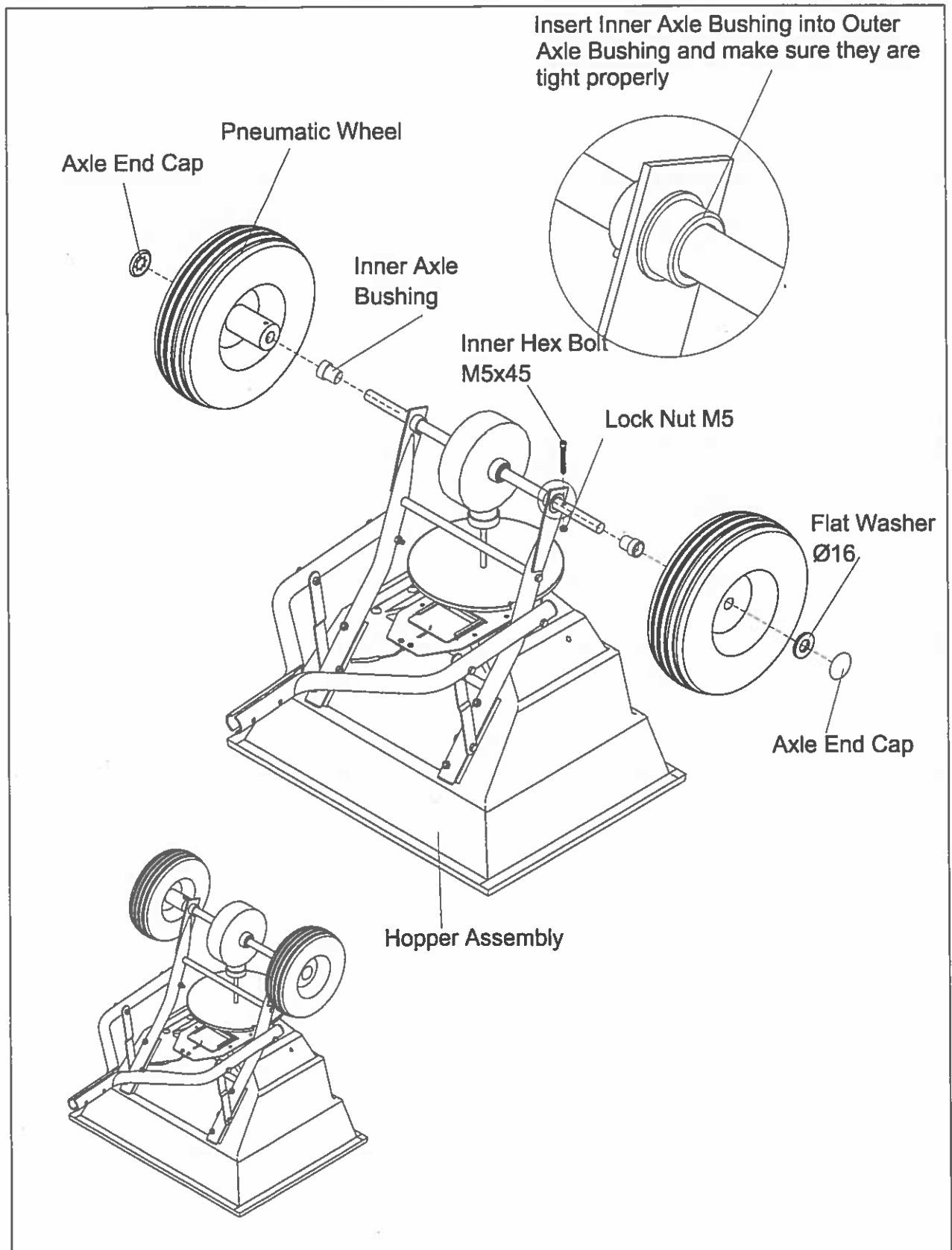
STEP 2: Attach the Wheel Assembly Frame on each side of the Gear Box Axle and Fixing Connecting Rod, insert two bolts M6x35 into the Fixing Connecting Rod through Wheel Assembly Frame. Make sure the hole on Axle of Gear Box is to be on the right side when assembly as shown. Attach Wheel Assembly Frames and Support Leg onto Hopper using bolts M6x45, lock nuts M6 and Big Flat Washers Ø6. Note: The bolts and nuts needn't be tightened yet.



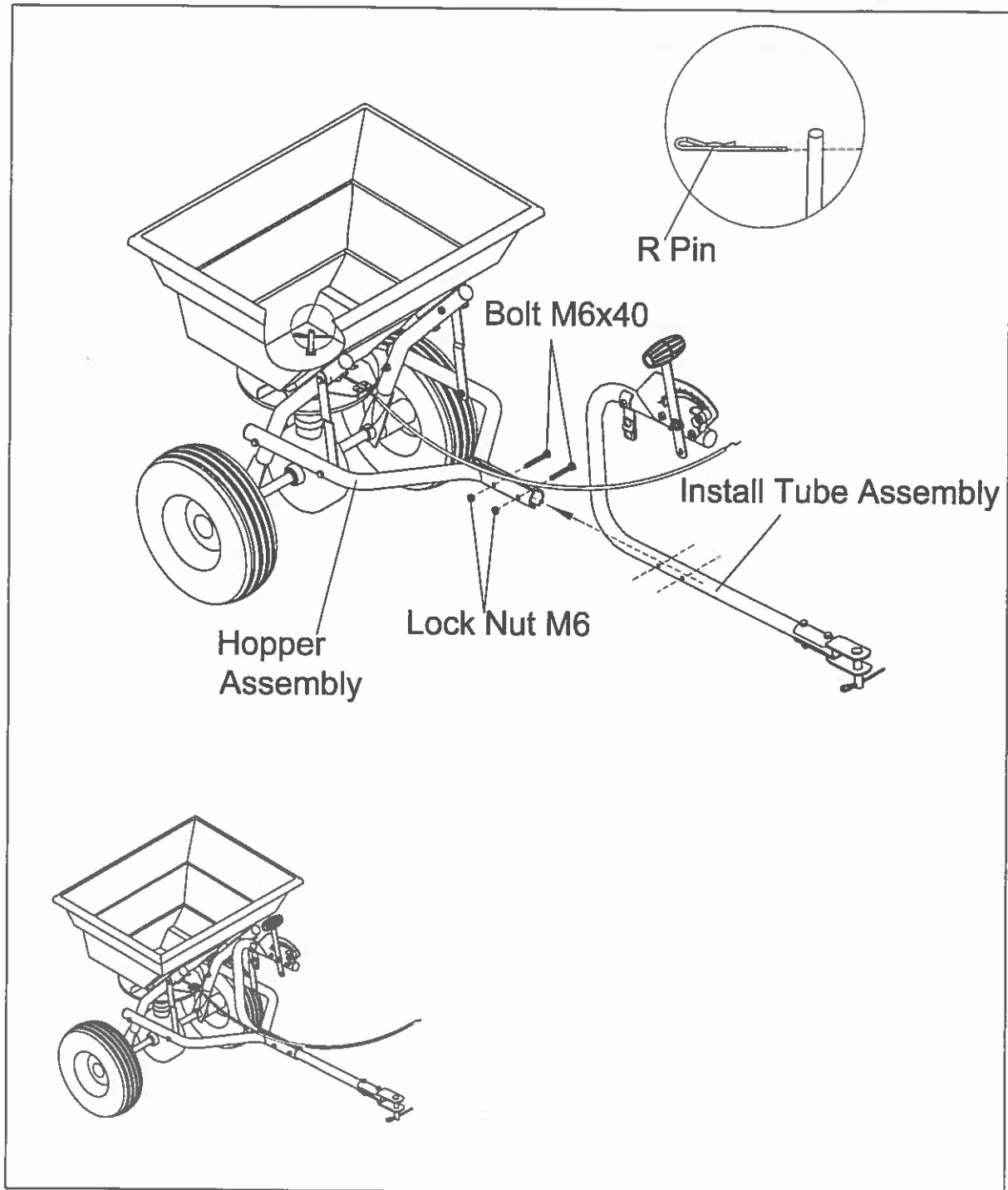
STEP3: Install one end of the connecting plate on the wheel frame by Bolt M6x35 and Lock Nut M6. Then install the connecting rod on the wheel frame by Bolt M6x55 and Lock Nut M6 and fixed the connecting plate with connecting rod by Bolt M6x35. Note: The Bolt and Nuts needn't be tightened.



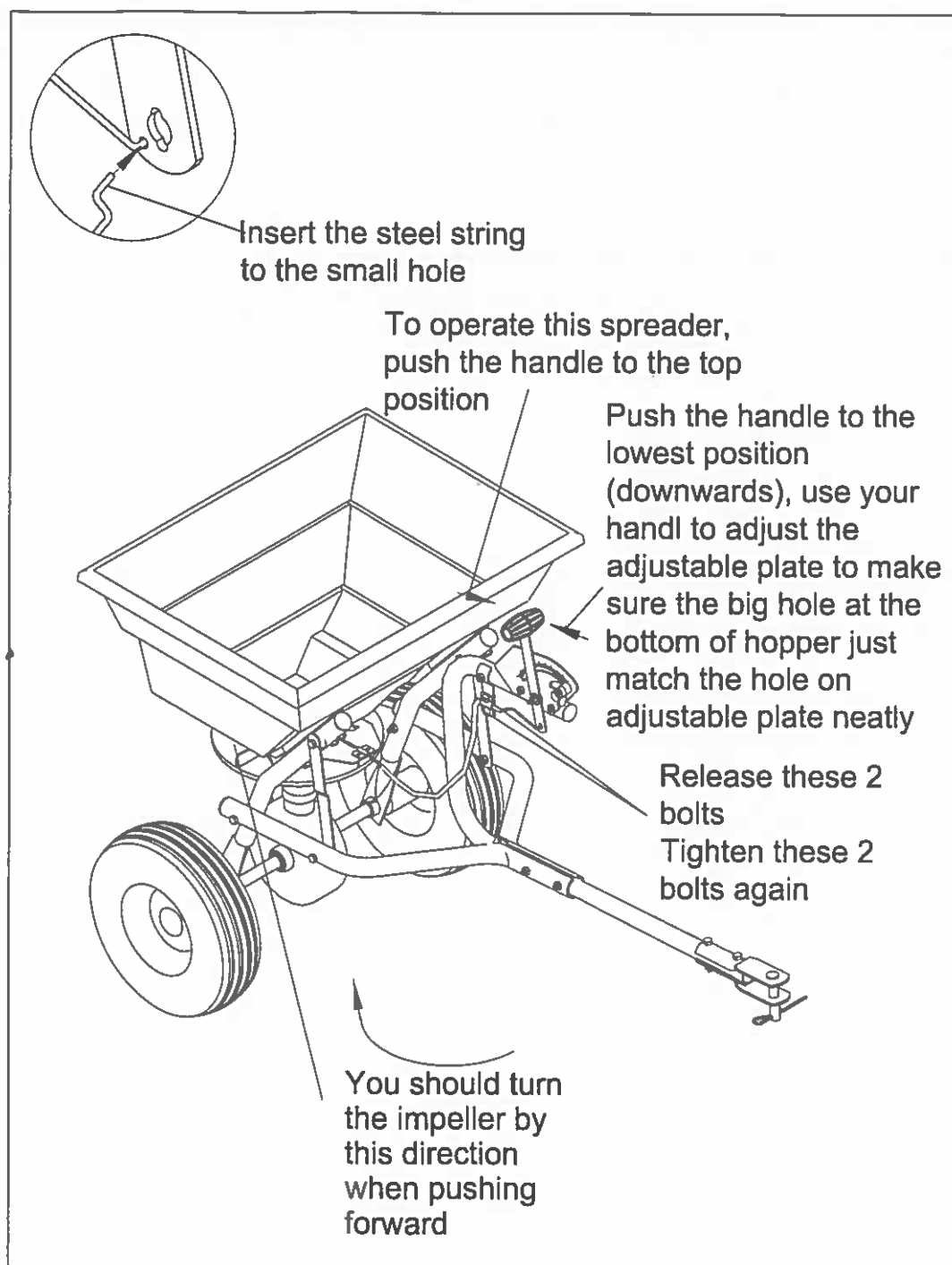
STEP 4: Insert Inner Axle Bushing into Outer Axle Bushing and make sure they are tight neatly. Install right Wheel Assembly to right Axle using inner hex bolt M5x45 and lock nut M5, and then install the Cap onto right Axle using a wooden or rubber hammer. Now install left Wheel Assembly to left Axle, put a flat washer Ø16 and install the Cap onto left Axle using a wooden or rubber hammer.



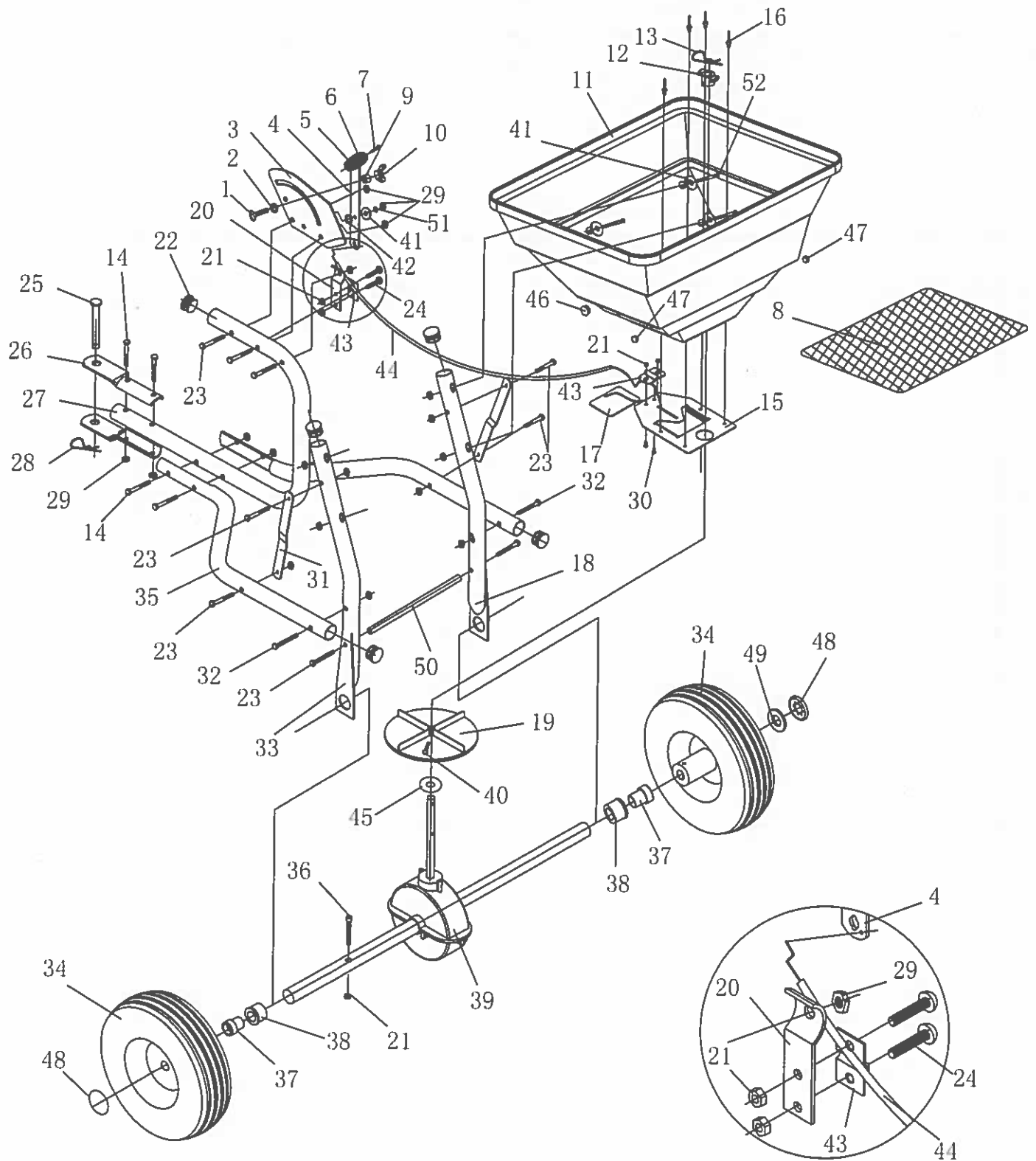
STEP5: Put the install tube assembly to hopper assembly using Bolt M6x40 and Lock Nut M6. **NOW GO BACK AND TIGHTEN ALL NUTS AND BOLTS STARTING WITH FIRST STEP. DO NOT OVER TIGHTEN**



STEP6: ADJUSTMENTS. When you finished all above steps, You don't need to do the following steps. If they are not match neatly, you may need to do the following steps. To operate this spreader, push the handle to the top position (upwards). You may move the position of Wing nut on Gauge & Lever to adjust the spacer of three holes between hopper and adjustable plate as per your need when spreading.



PARTS DRAWING



PARTS LIST

Ref.No.	Drawing No.	Description	Qty
1	9114-06025-DG	Carriage Bolt M6x25	1
2	9315-08000-DG	Tooth Washer Ø8	1
3	N570-10000-DG	Gauge & Lever Assembly	1
4	N580-00005-DG	Adjust Handle Pole	1
5	N570-00014	Adjust Handle A	1
6	N570-00015	Adjust Handle B	1
7	9118-04018-DG	Screw M4x18	1
8	N511-00004	Hopper Screen	1
9	N510-00016	Spacer	1
10	N510-00019	Wing Nut M6	1
11	N580-00006	Hopper	1
12	N510-00004	Center Cover	1
13	N570-00017-DG	R Pin Ø2	1
14	9101-06040-DG	Bolt M6x40	4
15	N580-00019	Fixed Plate	1
16	9503-05012	Screw Ø5X12	4
17	N580-00020	Adjustable Plate	1
18	N580-00004	Wheel Frame Assembly (Left)	1
19	N510-00003	Impeller	1
20	N580-00008	Line Clamp Bottom Plate	1
21	9206-05000-DG	Lock Nut M5	5
22	T680-00003	Tube End Cap	5
23	9101-06035-DG	Hex Bolt M6x35	9
24	9110-05010-DG	Round Head Bolt M5x10	2
25	N390-00001-DG	Round Head Pin	1
26	N511-00003	Tow Bar Connect Plate	2
27	N511-00002-DG	Install Tube Assembly	1
28	9499-03000-DG	R Pin Ø3	1
29	9206-06000-DG	Lock Nut M6	18
30	9110-05012-DG	Screw M5X12	2
31	N570-00010-DG	Connect plate	2
32	9101-06055-DG	Bolt M6x55	2
33	N580-00003-DG	Wheel Frame Assembly (Right)	1
34	N511-00005	Pneumatic Wheel	2
35	N511-00001	Connect Rod	2

PARTS LIST

Ref.No.	Drawing No.	Description	Qty
36	9105-05045-DG	Inner Hex Bolt M5x45	1
37	N570-00018	Inner Axle Bushing	2
38	N570-00011	Outer Axle Bushing	2
39	N511-30000	Gear Box & Axle Assembly	1
40	9110-04020-DG	Screw M4x20	1
41	9302-06000-DG	Big Flat Washer Ø6	5
42	C130-00004	Nylon Washer	1
43	N580-00009	Line Clamp Press Plate	2
44	N511-20000	Control Rod	1
45	N570-00002	Thin Washer	1
46	N580-00011	Big End Cap	1
47	N580-00010	Small End Cap	2
48	N511-40000	Axle End Cover	2
49	9301-16000-DG	Flat Washer Ø16	1
50	N580-00013-DG	Fixing Connecting Rod	1
51	9306-06000-DG	Spring Washer Ø6	1
52	9301-06045-DG	Hex Bolt M6x45	4